



STONEFLY
LODGE

NEW ZEALAND





Multi-award-winning Stonefly Lodge is situated on 350 acres of private forest on the banks of the Motueka River, only 50 minutes drive from Nelson. The luxury 5-star Lodge is centrally located between three spectacular National Parks (Abel Tasman, Nelson Lakes and Kahurangi National Park), making the Lodge an ideal base from which to explore the region.

Guests enjoy luxury accommodation, fine cuisine, the remote location, spectacular scenery and easy access to world-renown trout rivers - for some of New Zealand's best fly fishing experiences.





STONEFLY
LODGE

Trail Map



FALCONBRAE
VILLA





Interior

Architecturally designed and engineered, the Lodge has been built from natural stone and timber acquired from the property. Alternative energy sources power the entire complex built on-site to reduce the Lodge's environmental footprint.

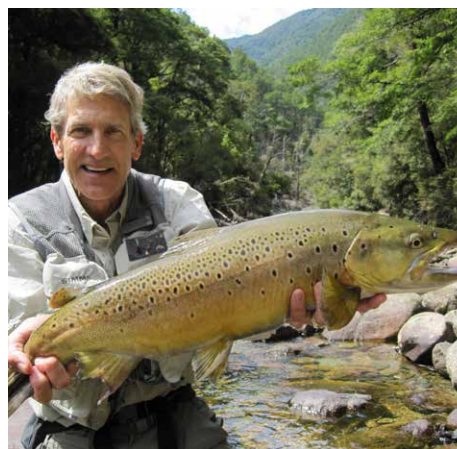
The Lodge interior focuses on the large stone double-sided fireplace which provides the ambience to the games room, dining room and sunroom. A large open kitchen adjoining the dining area offers a relaxed atmosphere where guests dine together, or they may select a private dining experience. Breakfasts can be served on the guest room private balcony. The cuisine is designed around seasonally fresh produce from the extensive garden with homemade produce, local quality meats and fresh seasonal seafood. Special dietary requirements can be catered for.

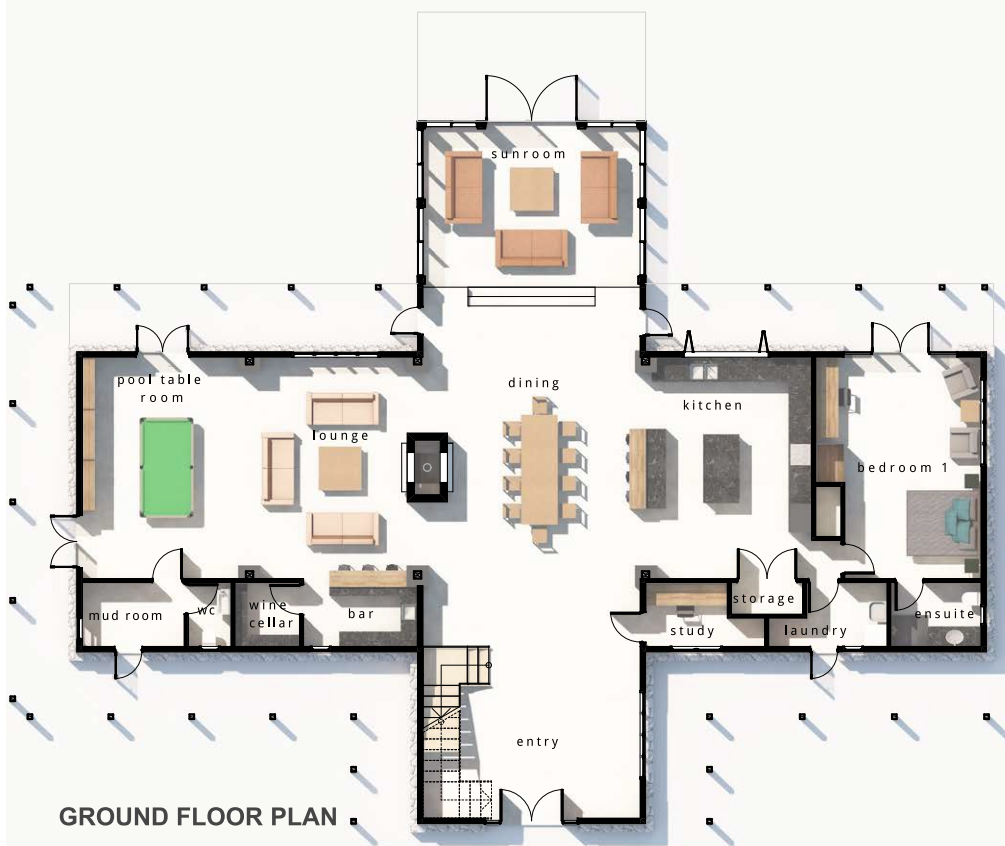
Complete with a library, snooker table, and the "Matai Bar", guests have the ideal setting to relax after an exciting day of fly fishing or after exploring the numerous sites and attractions of the region.



Centrally located between three major National Parks, Stonefly Lodge is an ideal luxury private retreat of the highest of standards, providing easy access to all the significant activities in the Nelson –Tasman Region.

- Fly Fishing
- Heli-fishing
- Abel Tasman National Park
- Kahurangi National Park
- Nelson Lakes National Park
- 22 Wineries
- Over 30 craft studios and galleries
- Great Taste cycle trail
- Scenic Heli-flights
- Horse riding





The Lodge

Four guest rooms are located upstairs complete with ensuites, heated towel rails, and private balconies overlooking the Motueka River and surrounding mountains. The upper landing area above the dining room provides a quiet secluded place for fly tying, using the guest computer, indulging in a game of chess or relaxing with a good book.

Downstairs the open-plan design enables guests to mingle or find space to have a quiet time alone.

The lodge is an ideal 'exclusive use' facility, offering security access in a remote private setting, with easy access to all the attractions the region has to offer.

For larger groups Falcon Brae Villa www.falconbraevilla.co.nz is also available for exclusive use, offering a further Nine beds in a luxurious setting.

2023 / 2024- Retail rates (per day)

High Season (1 January 2023 to 31 May 2023)

Exclusive use: 1- 8 guests..... \$7,000.00

Closed Season (1 June 2023 to 30 September 2023)

High Season (1 October 2023 to 19 December 2023)

Exclusive use: 1- 8 guests..... \$8,000.00

Festive Season (20 December 2023 to 5 January 2024)

Exclusive use: 1-8 guests..... \$9,000.00

High Season: (6 January 2024 to 31 May 2024)

Exclusive use: 1- 8 guests..... \$8,000.00

Closed Season (1 June 2024 to 30 September 2024)

Our rates are in NZ dollars and include luxury accommodation, daily continental and full cooked country breakfast, pre-dinner drinks with canapés and a four-course gourmet dinner. (GST 15% Inclusive)

A minimum stay of two nights is required during low season, and three nights in the high and festive seasons.

Guided Fly Fishing - \$950 per day (GST Inclusive)

Maximum 2 anglers per guide (fishing licence is an additional fee – see Fish & Game New Zealand for more information: www.fishandgame.org.nz)

Includes: experienced fishing guide, complimentary top range waders, boots, rods, reels, a pack lunch and 4WD transport to the rivers.

Heli Fishing - POA

The cost for this package is determined by the time taken in the helicopter to the remote site and the number of people on each flight so this price can only be worked out on an individual cost basis when booked.

Visit our website for any special fishing packages www.stoneflylodge.co.nz

Transfers

Road transfers from Nelson Airport (50 minutes) are \$300 each way (1-2 persons), \$500 (3-8 persons).

Helicopter transfers from Nelson Airport to our on-site helipad (15 minutes) can be quoted and depends on the number of passengers and luggage.

Booking Conditions

A 50% deposit is required to confirm sole-use bookings. Full payment is required 60 days prior to arrival.

Cancellation Policy

90 days or more from arrival.....1-night cancellation fee

Within 90 days of arrival50% cancellation fee

Within 60 days of arrival100% cancellation fee

In the case of a cancellation due to a government authority banning travel or closing borders due to the Coronavirus, we will accept moving the booking to a future date next season at next season's applicable rates, instead of applying the standard cancellation fee.

We highly recommend obtaining travel insurance to cover any cancellation fees.

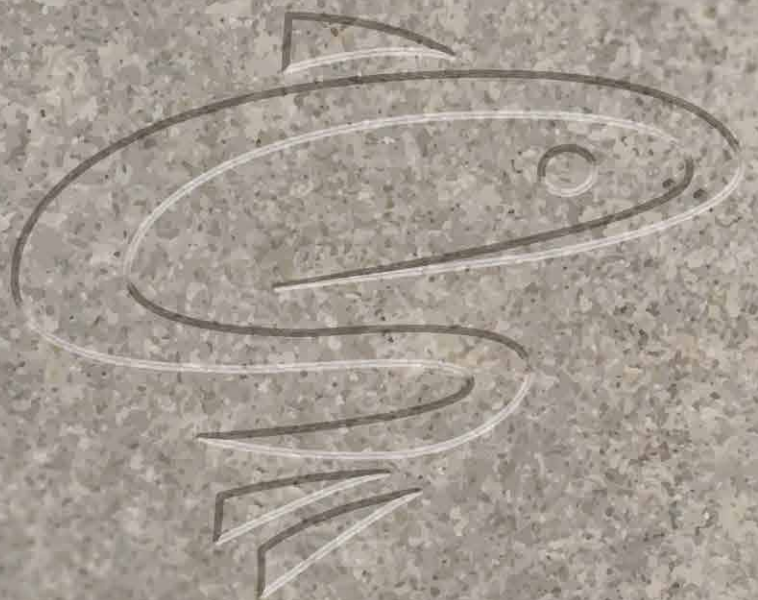
General

Check-in is from 2 pm onwards, (no lunch catered for on the day of arrival unless by prior arrangement).

Check-out is 11 am.

Bedding in Stonefly allows for eight adults in four deluxe rooms.

For larger group bookings, Falcon Brae Villa could also be utilised offering a further three suites, allowing for six extra guests. Falcon Brae also has a bunk room which can accommodate up to three children.



STONEFLY
LODGE

3256 Motueka Valley Highway, RD2 Wakefield 7096, New Zealand
+64 3 522 4479 | info@stoneflylodge.co.nz | www.stoneflylodge.co.nz